

Appendix III

The ASCII characters, and the graphics characters *of the CPC464*

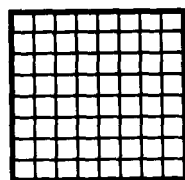
III.1 ASCII

For convenient reference, we reproduce here the standard ASCII reference character set using decimal, octal and hex notation, together with the ASCII code where appropriate. Each of the CPC464 character cells is also represented in detail.

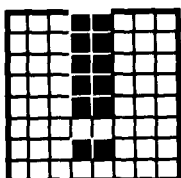
DEC	OCTAL	HEX	ASCII characters	DEC	OCTAL	HEX	ASCII	DEC	OCTAL	HEX	ASCII
0	000	00	NUL ((CTRL)a)	50	062	32	2	100	144	64	d
1	001	01	SOH ((CTRL)A)	51	063	33	3	101	145	65	e
2	002	02	STX ((CTRL)B)	52	064	34	4	102	146	66	f
3	003	03	ETX ((CTRL)C)	53	065	35	5	103	147	67	g
4	004	04	EOT ((CTRL)D)	54	066	36	6	104	150	68	h
5	005	05	ENQ ((CTRL)E)	55	067	37	7	105	151	69	i
6	006	06	ACK ((CTRL)F)	56	070	38	8	106	152	6A	j
7	007	07	BEL ((CTRL)G)	57	071	39	9	107	153	6B	k
8	010	08	BS ((CTRL)H)	58	072	3A	:	108	154	6C	l
9	011	09	HT ((CTRL)I)	59	073	3B	;	109	155	6D	m
10	012	0A	LF ((CTRL)J)	60	074	3c	<	110	156	6E	n
11	013	0B	VT ((CTRL)K)	61	075	3D	=	111	157	6F	o
12	014	0C	FF ((CTRL)L)	62	076	3E	>	112	160	70	p
13	015	0D	CR ((CTRL)M)	63	077	3F	?	113	161	71	q
14	016	0E	SO ((CTRL)N)	64	100	40	@	114	162	72	r
15	017	0F	SI ((CTRL)O)	65	101	41	A	115	163	73	s
16	020	10	DLE ((CTRL)P)	66	102	42	B	116	164	74	t
17	021	11	DC1 ((CTRL)Q)	67	103	43	C	117	165	75	u
18	022	12	DC2 ((CTRL)R)	68	104	44	D	118	166	76	v
19	023	13	DC3 ((CTRL)S)	69	105	45	E	119	167	77	w
20	024	14	DC4 ((CTRL)T)	70	106	46	F	120	170	78	x
21	025	15	NAK ((CTRL)U)	71	107	47	G	121	171	79	y
22	026	16	SYN ((CTRL)V)	72	110	48	H	122	172	7A	z
23	027	17	ETB ((CTRL)W)	73	111	49	I	123	173	7B	{
24	030	18	CAN ((CTRL)X)	74	112	4A	J	124	174	7C	
25	031	19	EM ((CTRL)Y)	75				125	175	7D	}
26	032	1A	SUB ((CTRL)Z)	76	113	4B	K	126	176	7E	~
27	033	1B	ESC	77	114	4C	L				
28	034	1C	FS	78	115	4D	M				
29	035	1D	GS	79	116	4E	N				
30	036	1E	RS	80	117	4F	O				
31	037	1F	us	81	120	50	P				
32	040	20	SP	82	121	51	Q				
33	041	21	!	83	122	52	R				
34	042	22	"	84	123	53	S				
35	043	23	#	85	124	54	T				
36	044	24	\$	86	125	55	U				
37	045	25	%	87	126	56	V				
38	046	26	&	88	127	57	W				
39	047	27	'	89	130	58	X				
40	050	28	(90	131	59	Y				
41	051	29)	91	132	5A	Z				
42	052	2A	*	92	133	5B	[
43	053	2B	+	93	134	5C	\				
44	054	2c	,	94	135	5D]				
45	055	2D	.	95	136	5E	^				
46	056	2E	/	96	137	5F	_				
47	057	2F	/	97	140	60	`				
48	060	30	0	98	141	61	a				
49	061	31	1	99	142	62	b				
					143	63	c				

III. 2 CPC464 Machine-specific firmware character set

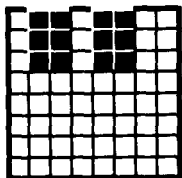
The characters reproduced here are plotted on the standard 8x8 cell matrix used to write the screen of the CPC464. User Defined Characters may be grouped for special effects and butted close against each other - see the SYMBOL command description given in Chapter 8.



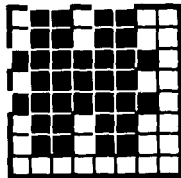
32 &H2C
&X00100000



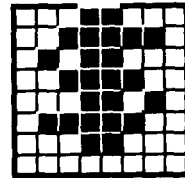
33
&H21
&X001 00001



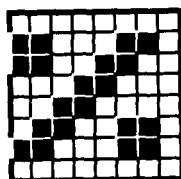
34
&H22
&x0010001 0



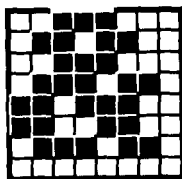
35
&H23
&X001 00011



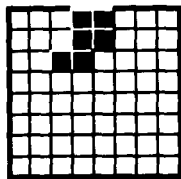
36
&H24
&x001001 00



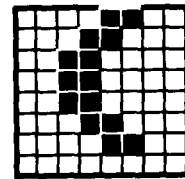
37
&H25
&X00100101



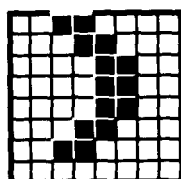
38
&H26
&x00100110



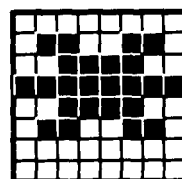
39
&H27
&X00100111



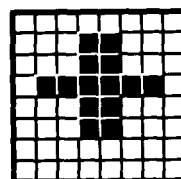
40
&H28
&x00101000



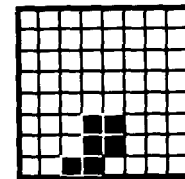
41
&H29
&x00101001



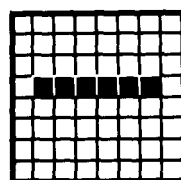
42
&H2A
8x00101010



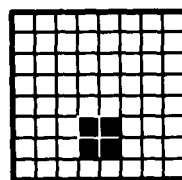
43
&H2B
&x00101011



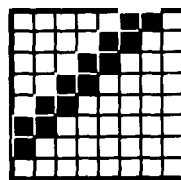
44
&H2C
&x00101100



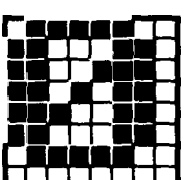
45
&H2D
&X00101101



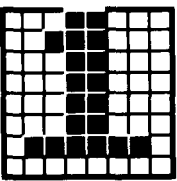
46
&H2E
&x00101110



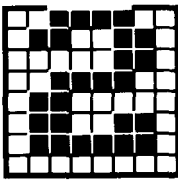
47
&H2F
&x00101111



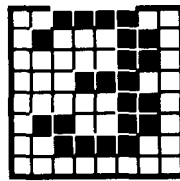
48
&H30
&X001 10000



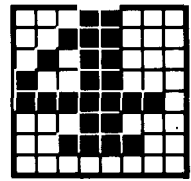
49
&H31
&x00110001



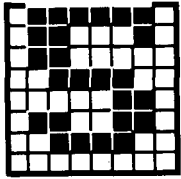
50
&H32
&x00110010



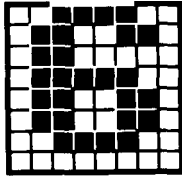
51
&H33
&X00110011



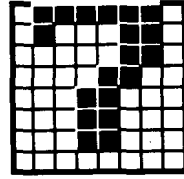
52
&H34
&x00110100



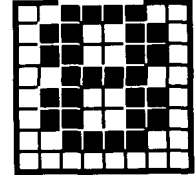
53
&H35
&x00110101



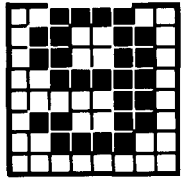
54
&H36
&x00110110



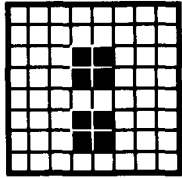
55
&H37
&x00110111



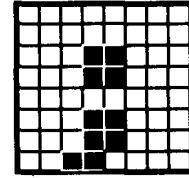
56
&H38
&X001 11000



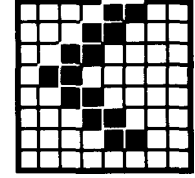
57
&H39
&x00111001



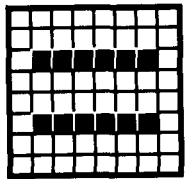
58
&H3A
&x00111010



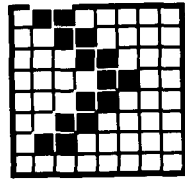
59
&H3B
&x00111011



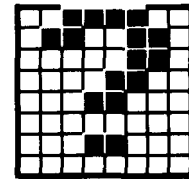
60
&H3C
&x00111100



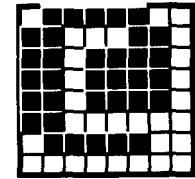
61
&H3D
&x00111101



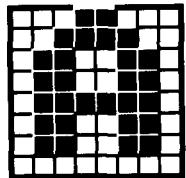
62
&H3E
&x00111110



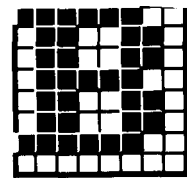
63
&H3F
&X00111111



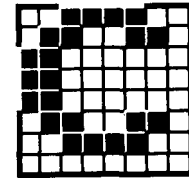
64
&H40
&X01000000



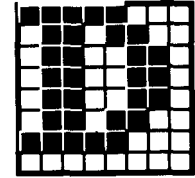
65
&H41
&x01000001



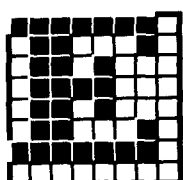
66
&H42
&X01000010



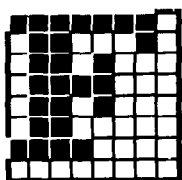
67
&H43
&x01000011



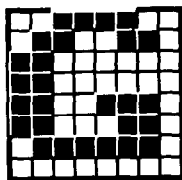
68
&H44
&x01000100



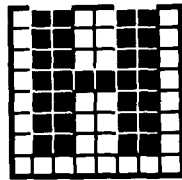
69
&H45
&X01000101



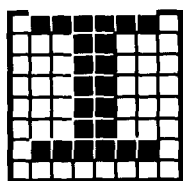
70
&H46
&x01000110



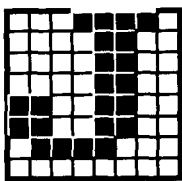
71
&H47
&X01000111



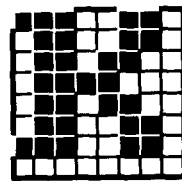
72
&H48
&X01 001000



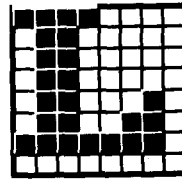
73
&H49
&x01001001



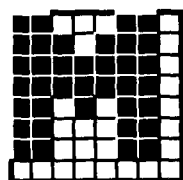
74
&H4A
&x01001010



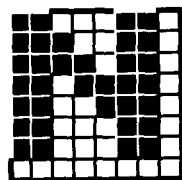
75
&H4B
&x01001011



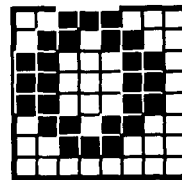
76
&H4C
&x01001100



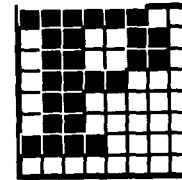
77
&H4D
&x01001101



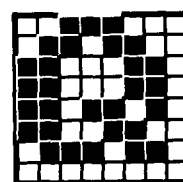
78
&H4E
&X01001110



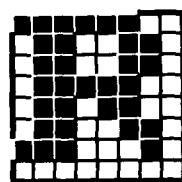
79
&H4F
&X01001111



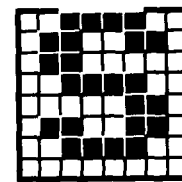
80
&H50
*ax*01010000



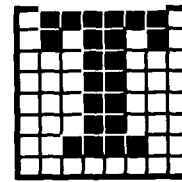
81
&H51
&x01010001



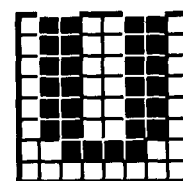
82
&H52
&x01010010



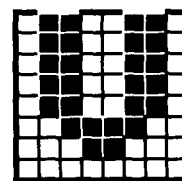
83
&H53
&x01010011



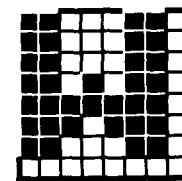
84
&H54
&X01010100



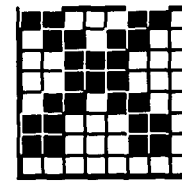
85
&H55
&x01010101



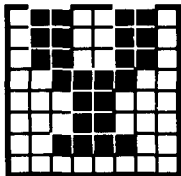
86
&H56
&X01010110



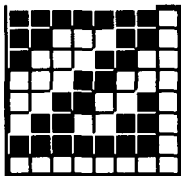
87
&H57
&x01010111



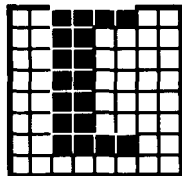
88
&H58
&x01011000



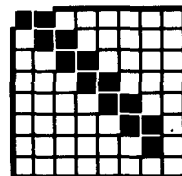
89
&H59
&x01011001



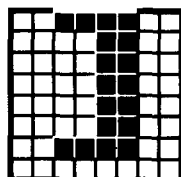
90
&H5A
&x01011010



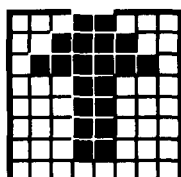
91
&H5B
&x01011011



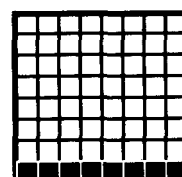
92
&H5C
&x01011100



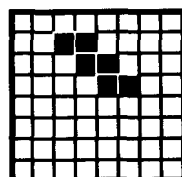
93
&H5D
&x01011101



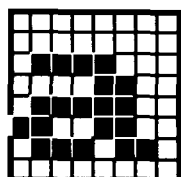
94
&H5E
&x01011110



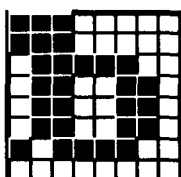
95
&H5F
&x01011111



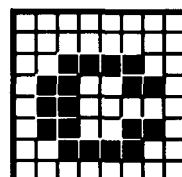
96
&H60
&x01100000



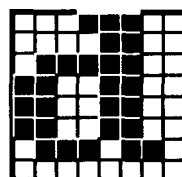
97
&H61
&x01100001



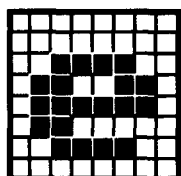
98
&H62
&x01100010



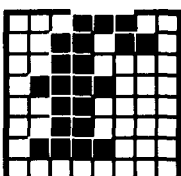
99
&H63
&x01100011



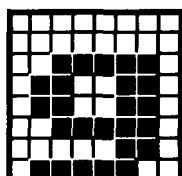
100
&H64
&x01100100



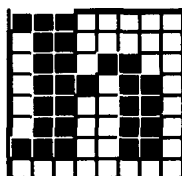
101
&H65
&x01100101



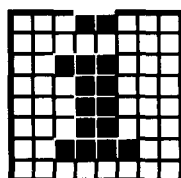
102
&H66
&x01100110



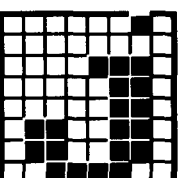
103
&H67
&x01100111



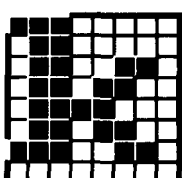
104
&H68
&x01101000



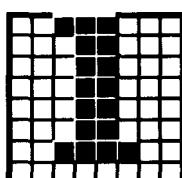
105
&H69
&x01101001



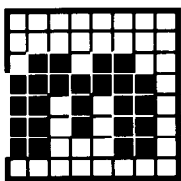
106
&H6A
&x01101010



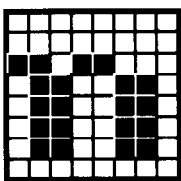
107
&H6B
&x01101011



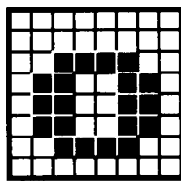
108
&H6C
&x01101100



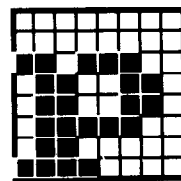
109
&H6D
&x01101101



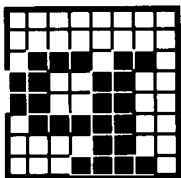
110
&H6E
&x01101110



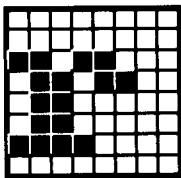
111
&H6F
&x01101111



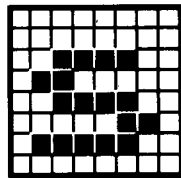
112
&H70
&x011110000



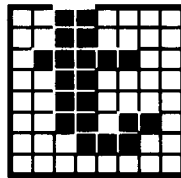
113
&H71
&x011110001



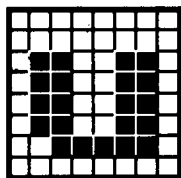
114
&H72
&x011110010



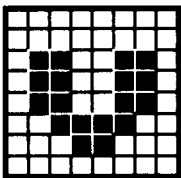
115
&H73
&x011110011



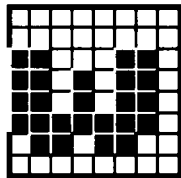
116
&H74
&x011110100



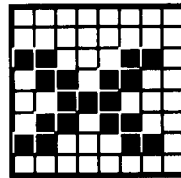
117
&H75
&x011110101



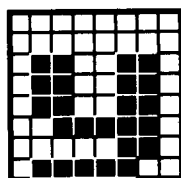
118
&H76
&x011110110



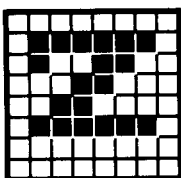
119
&H77
&x011110111



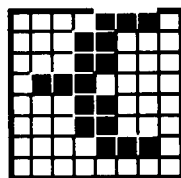
120
&H78
&x011111000



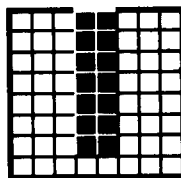
121
&H79
&x011111001



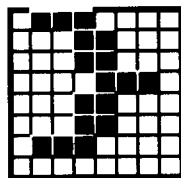
122
&H7A
&x011111010



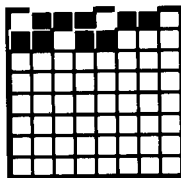
123
&H7B
&x011111011



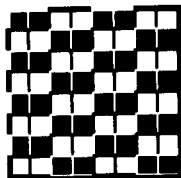
124
&H7C
&x011111100



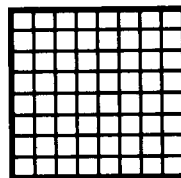
125
&H7D
&x011111101



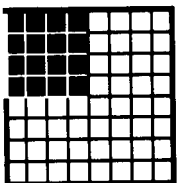
126
&H7E
&x011111110



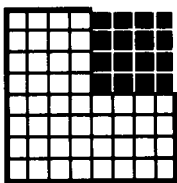
127
&H7F
&x011111111



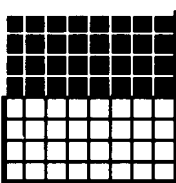
128
&H80
&x100000000



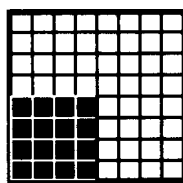
129
&H81
&X10000001



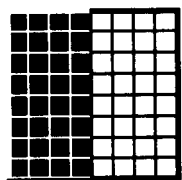
130
&H82
&x10000010



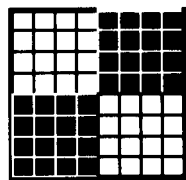
131
&H83
&x10000011



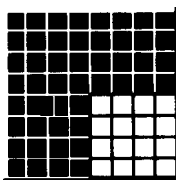
132
&H84
&X10000100



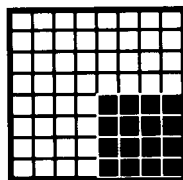
133
&H85
&x10000101



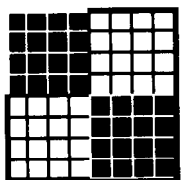
134
&H86
&x10000110



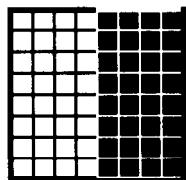
135
&H87
&x10000111



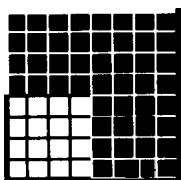
136
&H88
&x10001000



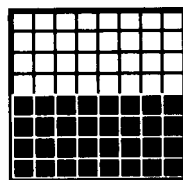
137
&H89
&x10001001



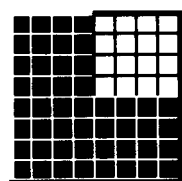
138
&H8A
&x10001010



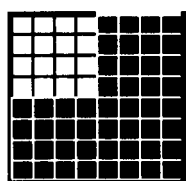
139
&H8B
&x10001011



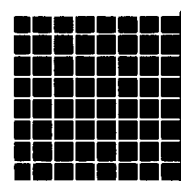
140
&H8C
&x10001100



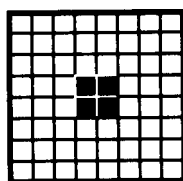
141
&H8D
&X10001101



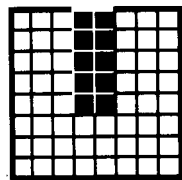
142
&H8E
&x10001110



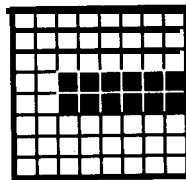
143
&H8F
&x10001111



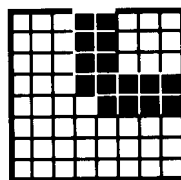
144
&H90
&x10010000



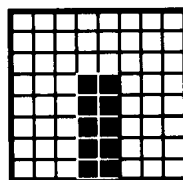
145
&H91
&X10010001



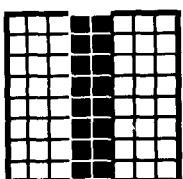
146
&H92
&x10010010



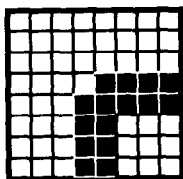
147
&H93
&X10010011



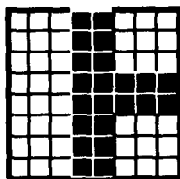
148
&H94
&x10010100



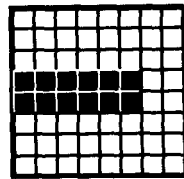
149
&H95
&x10010101



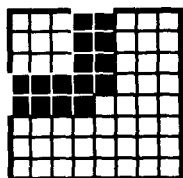
150
&H96
&x10010110



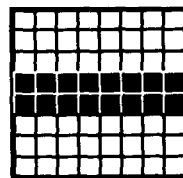
151
&H97
&x10010111



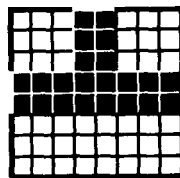
152
&H98
&x10011000



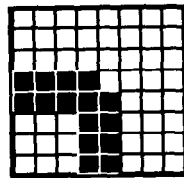
153
&H99
&x10011001



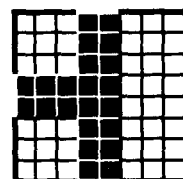
154
&H9A
&x10011010



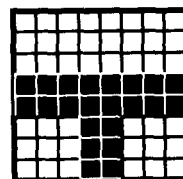
155
&H9B
&x10011011



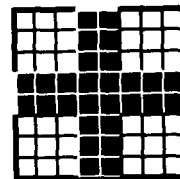
156
&H9C
&x10011100



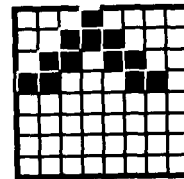
157
&H9D
&x10011101



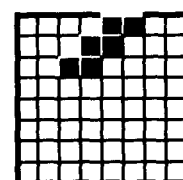
158
&H9E
&x10011110



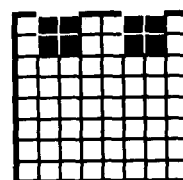
159
&H9F
&x10011111



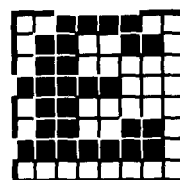
160
&HA0
&X10100000



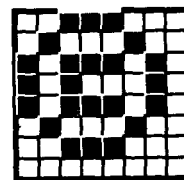
161
&HA1
&x10100001



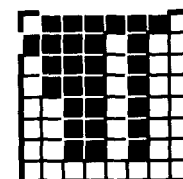
162
&HA2
&X10100010



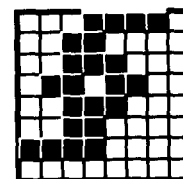
163
&HA3
&x10100011



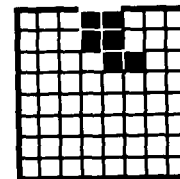
164
&HA4
&x10100100



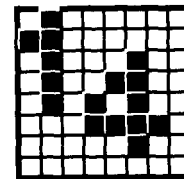
165
&HA5
&x10100101



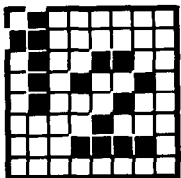
166
&HA6
&x10100110



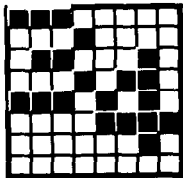
167
&HA7
&x10100111



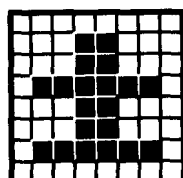
168
&HA8
&x10101000



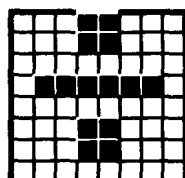
169
&HA9
&x10101001



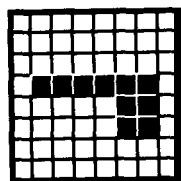
170
&HAA
&x10101010



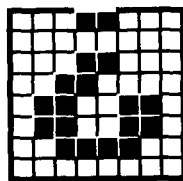
171
&HAB
&x10101011



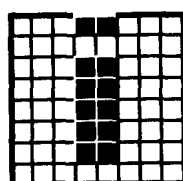
172
&HAC
&x10101100



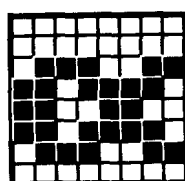
173
&HAD
&x10101101



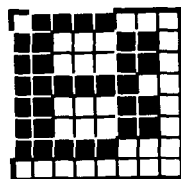
174
&HAE
&x10101110



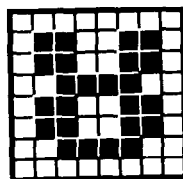
175
&HAF
&x10101111



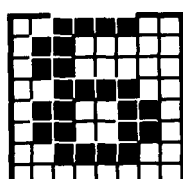
176
&HB0
&x10110000



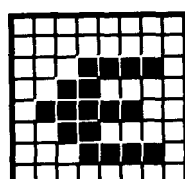
177
&HB1
&x10110001



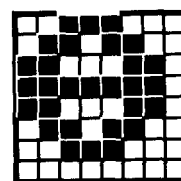
178
&HB2
&x10110010



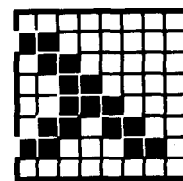
179
&HB3
&x10110011



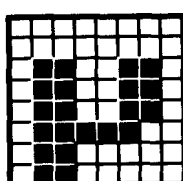
180
&HB4
&x10110100



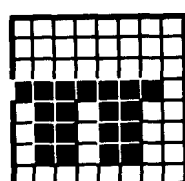
181
&HB5
&x10110101



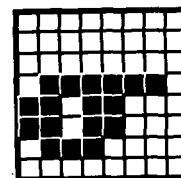
182
&HB6
&x10110110



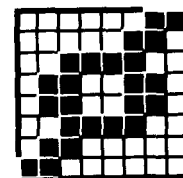
183
&HB7
&x10110111



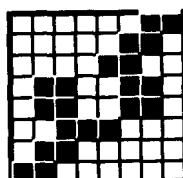
184
&HB8
&x10111000



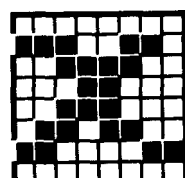
185
&HB9
&x10111001



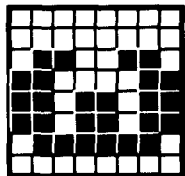
186
&HBA
&x10111010



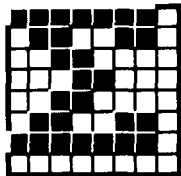
187
&HBB
&x10111011



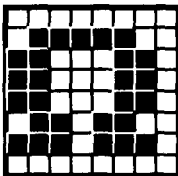
188
&HBC
&x10111100



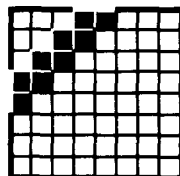
189
&HBD
&x10111101



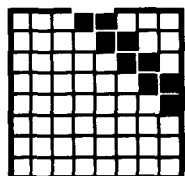
190
&HBE
&x10111110



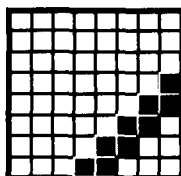
191
&HBF
&x10111111



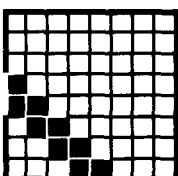
192
&HC0
&x11000000



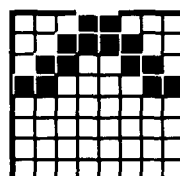
193
&HC1
&x11000001



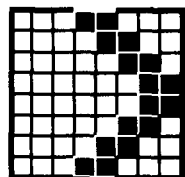
194
&HC2
&x11000010



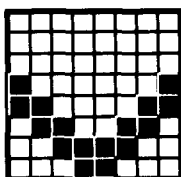
195
&HC3
&x11000011



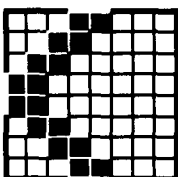
196
&HC4
&x11000100



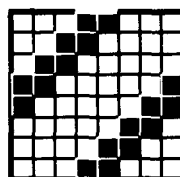
197
&HC5
&x11000101



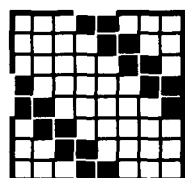
198
&HC6
&x11000110



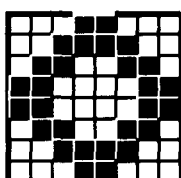
199
&HC7
&x11000111



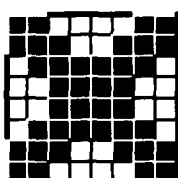
200
&HC8
&x11001000



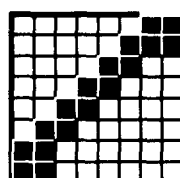
201
&HC9
&X11001001



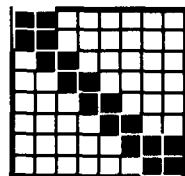
202
&HCA
&x11001010



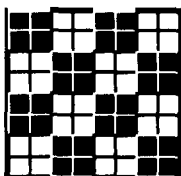
203
&HCB
&x11001011



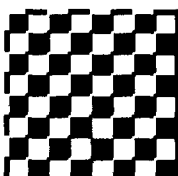
204
&HCC
&x11001100



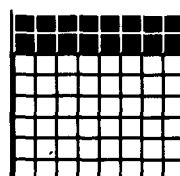
205
&HCD
&X11001101



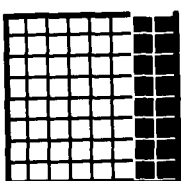
206
&HCE
&x11001110



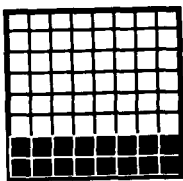
207
&HCF
&x11001111



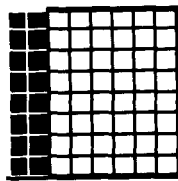
208
&HDO
&X11010000



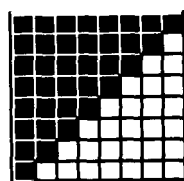
209
&HDI
&x11010001



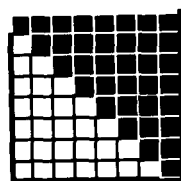
210
&HD2
&x11010010



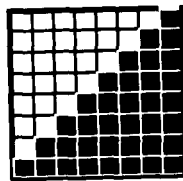
211
&HD3
&x11010011



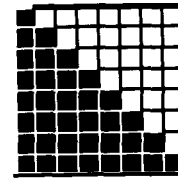
212
&HD4
&x11010100



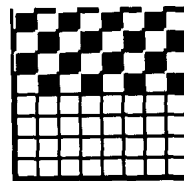
213
&HD5
&x11010101



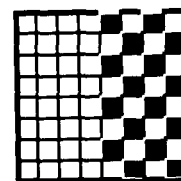
214
&HD6
&x11010110



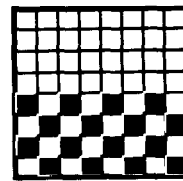
215
&HD7
&x11010111



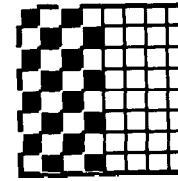
216
&HD8
&x11011000



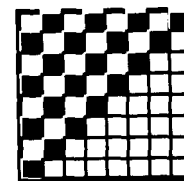
217
&HD9
&x11011001



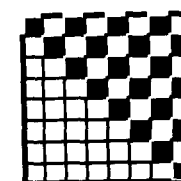
218
&HDA
&x11011010



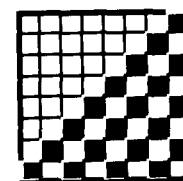
219
&HDB
&x11011011



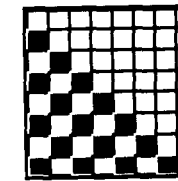
220
&HDC
&x11011100



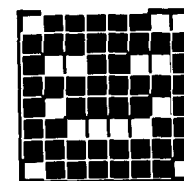
221
&HDD
&x11011101



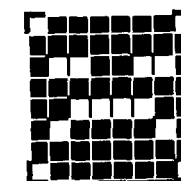
222
&HDE
&x11011110



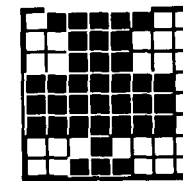
223
&HDF
&x11011111



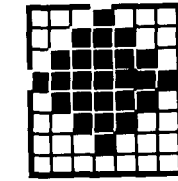
224
&HE0
&x11100000



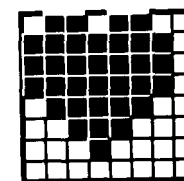
225
&HE1
&x11100001



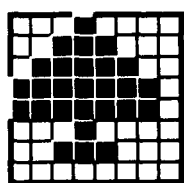
226
&HE2
&x11100010



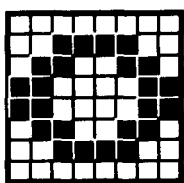
227
&HE3
&x11100011



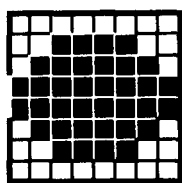
228
&HE4
&x11100100



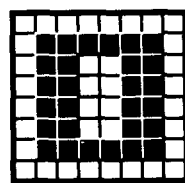
229
&HE5
&x11100101



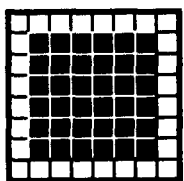
230
&HE6
&x11100110



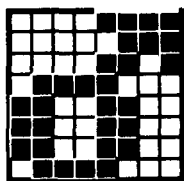
231
&HE7
&X11100111



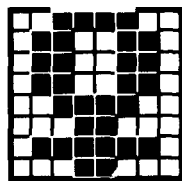
232
&HE6
&x11101000



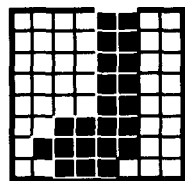
233
&HE9
&x11101001



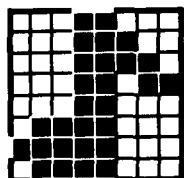
234
&HEA
&x11101010



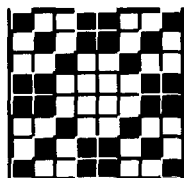
235
&HEB
&X11101011



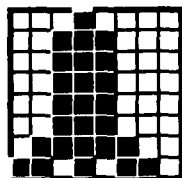
236
&HEC
&x11101100



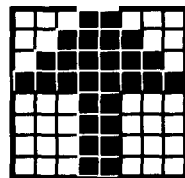
237
&HED
&x11101101



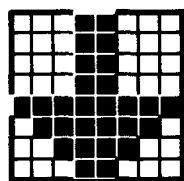
238
&HEE
&x11101110



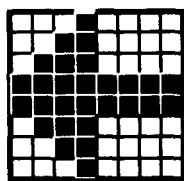
239
&HEF
&x11101111



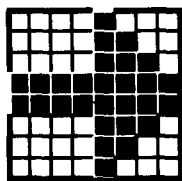
240
&HF0
&x11110000



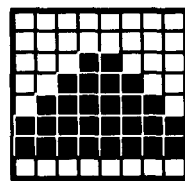
241
&HF1
&x11110001



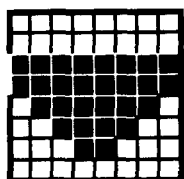
242
&HF2
&x11110010



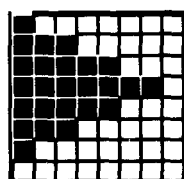
243
&HF3
&x11110011



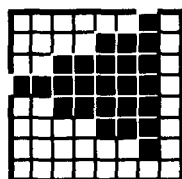
244
&HF4
&x11110100



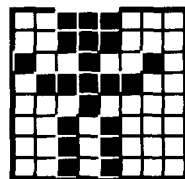
245
&HF5
&x11110101



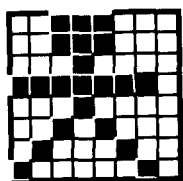
246
&HF6
&x11110110



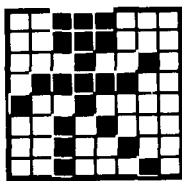
247
&HF7
&x11110111



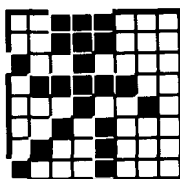
248
&HF8
&X11111000



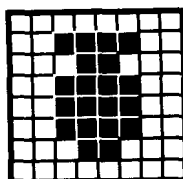
249
&HF9
&X111111001



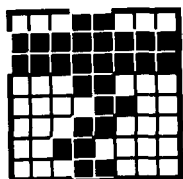
250
&HFA
&x111111010



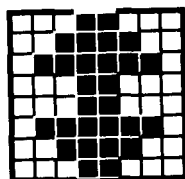
251
&HFB
&x111111011



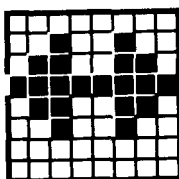
252
&HFC
&x111111100



253
&HFD
&x111111101

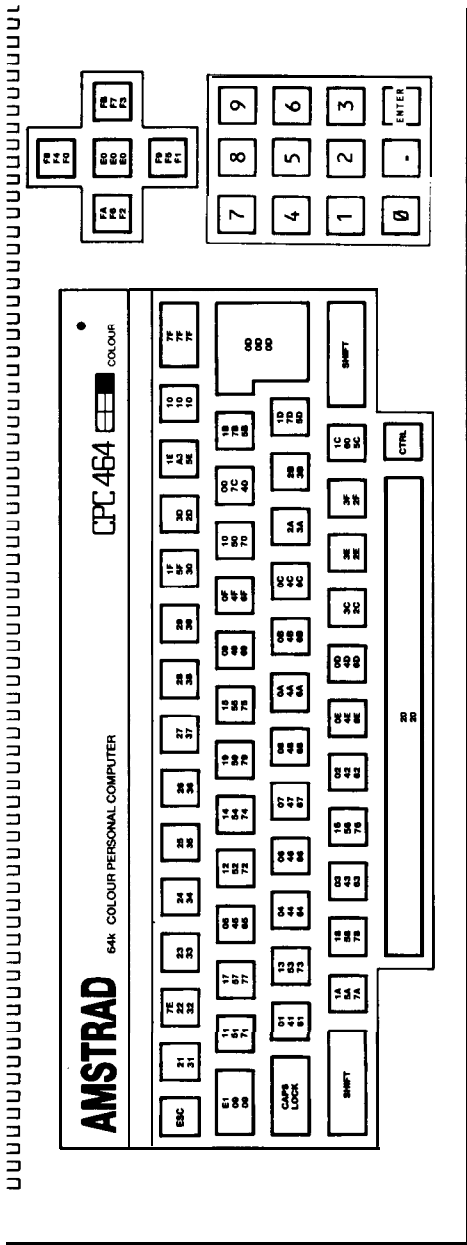


254
&HFE
&x111111110

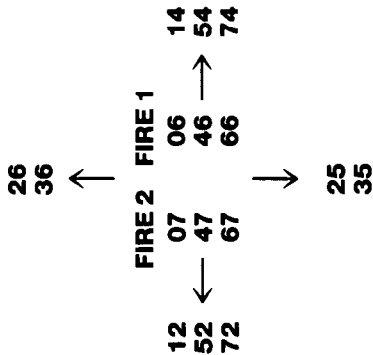


255
&HFF
&X11111111

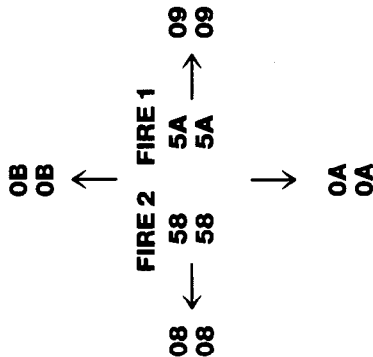
Default ASCII values

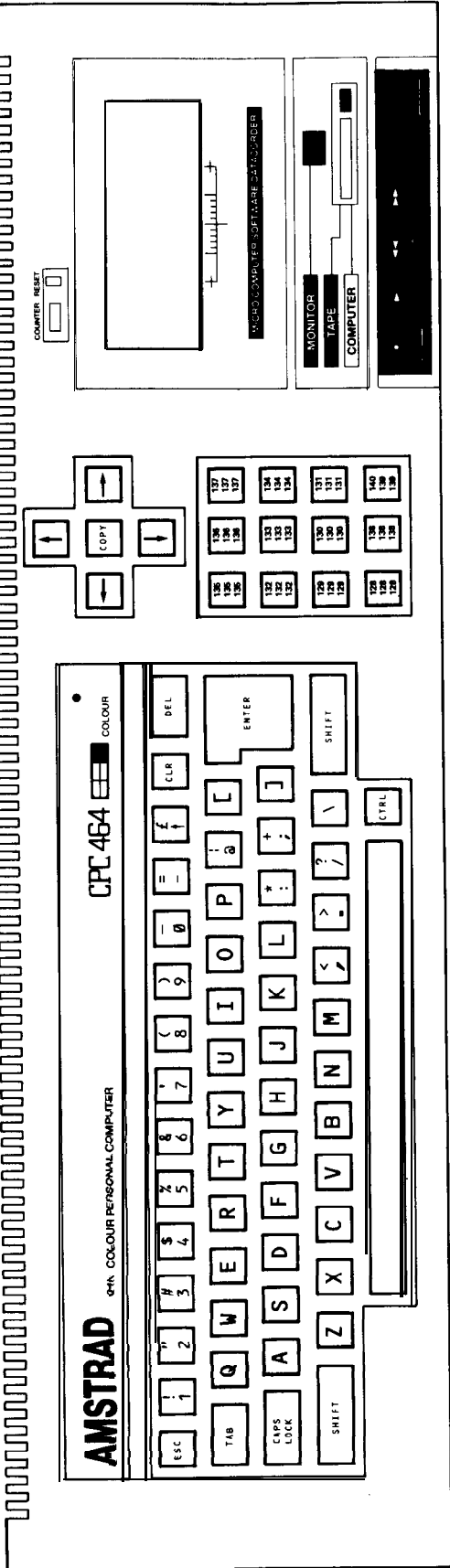


JOYSTICK 1



JOYSTICK 0





Expansion characters, default locations and values

exp char	value	ascii
128	0	30
129	1	31
130	2	32
131	3	33
132	4	34
133	5	35
134	6	36
135	7	37
136	8	38
137	9	39
138	.	2E
139	[enter]	0D
140	"run"	52,55,4E,22,0D

[illegible]

JOYSTICK 1

Diagram illustrating a crossroad intersection. The vertical road has a northbound lane with a speed limit of 51 and a southbound lane with a speed limit of 50. The horizontal road has a westbound lane labeled 48 and an eastbound lane labeled 49. The intersection is labeled "fire 2" and "fire 1".

JOYSTICK 0

A diagram showing a crosshair with four arrows pointing towards the center. The top arrow is labeled '72', the bottom arrow '73', the left arrow '74', and the right arrow '75'. In the center, the text 'fire 1' is written vertically, and 'fire 2' is written horizontally.